

WH

PN

DYNOGRIP™ ER COLLET CHUCKS

ENGLISH



**Precision Workholding Technology**

DYNOGRIP™ ER COLLET CHUCKS

# ER COLLET CHUCKS

## MATE™ ER COLLET CHUCKS

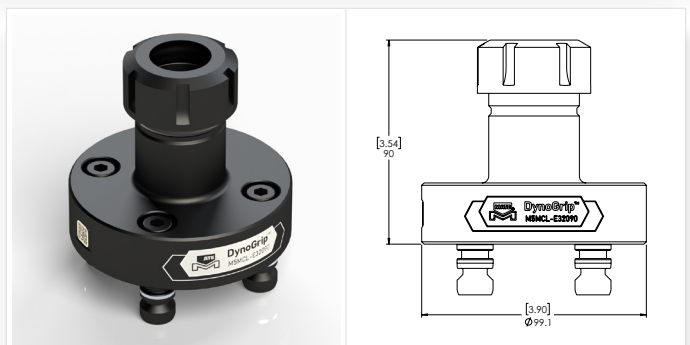
Mate DynoGrip ER Collet Chucks provide an easy and reliable solution for holding round parts during milling operations. They utilize industry-standard ER32 and ER40 collets to accommodate diameters from 2mm (0.08 in) to 32mm (1.26 in). For superior rigidity and longevity, Mate ER Collet Chucks use the same high-quality tool steels as the rest of our workholding line.

### Product highlights:

- High quality tool steel construction
- Compact size
- Zero Point quality engagement with 52mm four post pull stud pattern
- Made in USA

### M5MCL-E32090

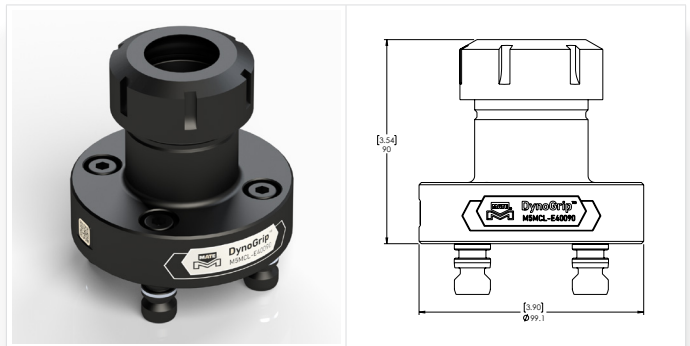
	Information	Metric	Imperial
Collet Size	ER-32*		
Collet Gripping Range		2 - 20 mm	0.08- 0.79 in
Height		90mm	3.54"
Weight		2.0kg	4.4lbs
Material	A2 Tool Steel		



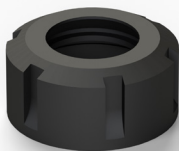
\*ER collet not included

### M5MCL-E40090

	Information	Metric	Imperial
Collet Size	ER-40*		
Collet Gripping Range		3 - 32 mm	0.12 - 1.26 in
Height		90mm	3.54"
Weight		2.1kg	4.7lbs
Material	A2 Tool Steel		

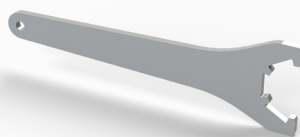


\*ER collet not included



### Lock Nut

Part Number	Use With
MATE02965	M5MCL-E32090
MATE02968	M5MCL-E40090



### Wrench

Part Number	Use With
MATE02966	M5MCL-E32090
MATE02969	M5MCL-E40090



### Stop Screw

Part Number	Use With
SSS00018	M5MCL-E32090 and M5MCL-E40090

[Dimensions in mm(in)]. Images are proportionate but not to scale.

